

SANDVIK DD211 UNDERGROUND DRILL RIG

TECHNICAL SPECIFICATION



Sandvik DD211 is a single boom electro hydraulic drillrig for productive drilling in narrow vein applications.

The proven hydraulic controls enable accurate drilling performance with efficient control.

Sandvik DD211 is equipped with CF Feed 12ft. This feed is designed for optimum operation and good durability.

The SB20 boom is a boom for fast and accurate drilling in drifting and tunneling of 26 m² cross sections.

The DD211 can be equipped with CF feed 10ft and 14ft lengths and CFX feed.

The RD314 rockdrill is a high efficiency rockdrill with powerful drilling performance and reduced drillsteel consumption.



HYDRAULIC ROCK DRILL

Rock drill	RD314	
Percussion Power	14 kW	
Percussion Pressure	Max. 190 bar	
Percussion rate	110 Hz	
Rotation Speed	Max. 520 rpm (OMS 100)	
Rotation torque	Max. 400 Nm (OMS100)	
Hole size (drifting)	33 - 51 mm	1.3 - 2 in
Hole size (cut hole)	64 - 89 mm	2.5 - 3.5 in
Shank adapter	(Male) 38 mm / R32 / T35 / T38	
Weight	115 kg	253.5 lb
Length	559 mm	22 in
Profile height	95 mm	3.7 in
Shank lubrication device	Air / oil mist, SLU	
Shank lubrication compressor	CT10, 1m³/min (7 bar)	
Air consumption	150-250 l/min	
Oil consumption	100 - 200 g/h	

BOOM

Boom	SB20	
Boom*	SB20 NV (N/A with instrumentation options)	
Parallel coverage	26m²	279.9 ft²
Parallelism	Automatic hydraulic	
Boom extension	900 mm	35.4 in
Boom weight, net	1700 kg	3748 lb
Roll-over angle	358°	

FEED

Feed	CF300-12' Cylinder - wire rope	
Feed force	Max. 25kN	
Feed extension	1350 mm	4.4 ft
CF Feed lengths*	10', 14'	
Telescopic feed*	CFX6/12	

FEED DIMENSIONS

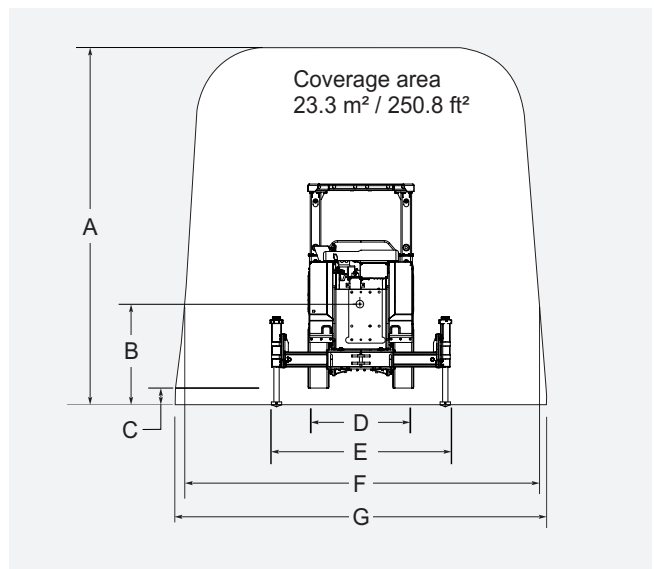
Feed CF300		Total Length	Hole length	Rod length	Net Weight
10 ft*		4170 mm 164.1 in	2840 mm 111.8 in	3090 mm 121.6 in	460 kg 1014.1lb
12 ft		4780 mm 188.2 in	3450 mm 135.8 in	3700 mm 145.7 in	490 kg 1080.2lb
14 ft*		5390 mm 212.2 in	4070 mm 160.2 in	4305 mm 169.5 in	520 kg 1146.4
CFX6/12*	Extended	4765 mm 187.6 in	3417 mm 134.5 in	3660 mm 144.1 in	505 kg 1113 lb
	Retracted	2930 mm 115.3 in	1587 mm 62.5 in	1830 mm 72 in	505 kg 1113 lb
	Rod handler	2930 mm 115.3 in	2807 mm 110.5 in	1830+1220 mm 72+48 in	645 kg 1422 lb

DRILLING OPTIONS

Single rod handler including FCC2 rod retainer**	CFX only
--	----------

COVERAGE AREA

A	4730 mm	186.2 in
B (center of boom)	1330 mm	52.4 in
C	220 mm	8.7 in
D	1400 mm	55.1 in
E	2352 mm	92.6 in
F	4918 mm	193.6 in
G	5154 mm	202.9 in



* Alternative options features/components ** Additional options features/components

HYDRAULIC SYSTEM

Powerpack	HPP 355 (55kW)
Percussion pump	100 cc (variable)
Rotation pump	45 cc (gear)
Filtration size	20 micron (pressure)
	10 micron (return)
Oil tank volume	160 litres (drilling)
Tank filling	Manual pump
Tank filling*	Electric pump
Oil cooler	Water cooled. Cooling capacity 1 x 30 kW
Biodegradable oils*	Shell Naturelle HFE46/HFE68

CONTROL SYSTEM

Type	THC561, Hydraulic
Manual boom control	Direct control
	Fully proportional
	Hydraulic parallelism
Drilling Control	Feed/percussion control
Automatic cycle	Stop and return automatics
Constant speed drilling**	Replaces feed / percussion control

CLEANING SYSTEM

High pressure cleaning system without reel**	Max. 180 bar
--	--------------

GREASING SYSTEMS AND OPTIONS

Greasing unit with pump, reel and nozzle**	Manual
Automatic greasing pump**	Carrier

ELECTRIC SYSTEM AND OPTIONS

Total input power	70kW
Main switch	MSE10
Standard voltages	380-690 VAC
Optional voltage*	1000 VAC, 50 Hz
Starting method	Star delta starter, 380VAC-550VAC
	Direct on line* 660VAC-1000VAC
Voltage fluctuation	± 10%
Automatic cable reel	TCR1
Cable reel control (in & Out)	Operator station
	Remote control at rear machine**
Electric cable rubber or PUR**	Depending on voltage (See spec 5-4100)
Ground fault and overcurrent protection**	VYK
Auxiliary electrical plug for external power**	Supply voltage
Sealed AGM batteries**	2 x 12V, 50Ah
Sensors in the jacks**	Indicator light for jacks up
Pressure switches on the jacks**	Indicator light for jacks down
Battery jump start**	

FLUSHING SYSTEM AND OPTIONS

Flushing	Water
Flushing flow supervision	Standard
Water pump type	WBPI
Water pump capacity	30 l/min
Water pump inlet pressure	2 bar (Min.)
Flushing water pressure	10 - 20 bar
Water flushing with air cleaning of holes	External water supply
	External or internal air supply (1 x 60l air receiver + IP5 + mine air inlet)
Air mist flushing**	External air and water supply
	Mine air connection with IP5 (incl.flushing flow supervision for air)
Water hose**	38 mm , 10 m 1" ½ , 32.8 ft

FIRE SUPPRESSION SYSTEM AND OPTIONS

Hand held fire extinguisher**	2 pcs, Type ABC
Manual fire suppression system**	6 nozzles
Automatic fire suppression system**	6 nozzles

* Alternative options features/components ** Additional options features/components

TRAMMING

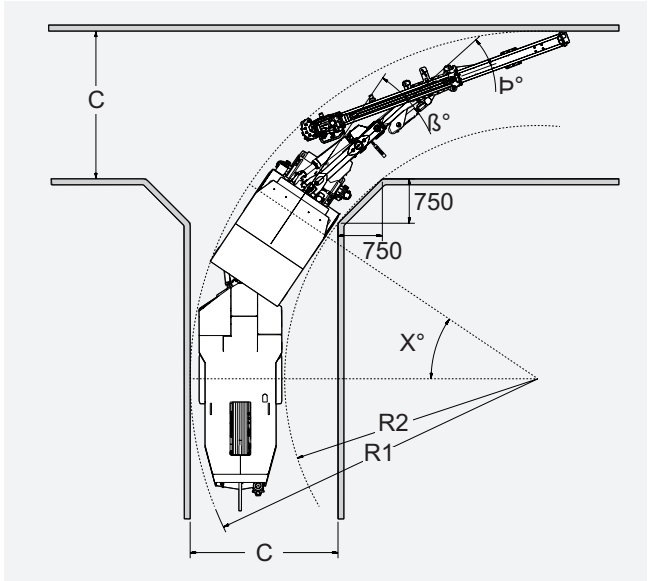
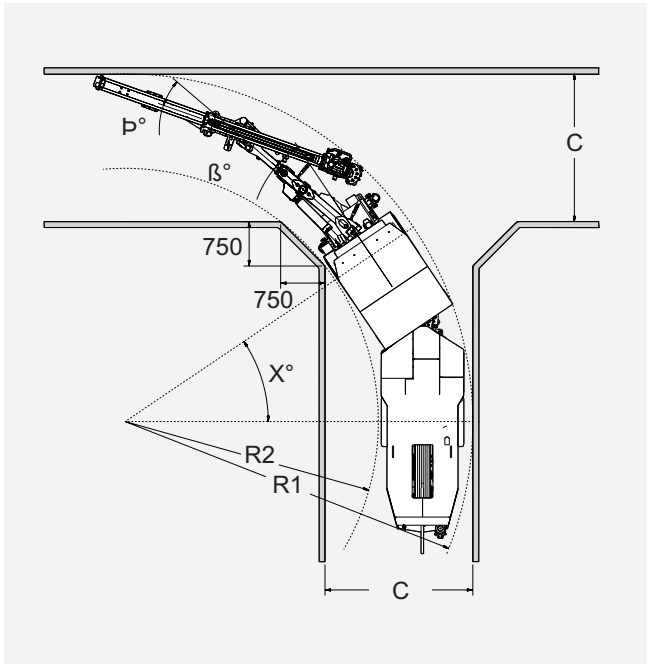
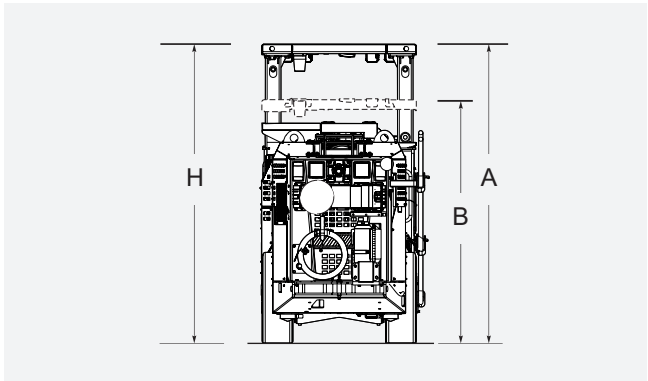
Tramming Speed	Horizontal: 7 km/h
	14% = 1:7 = 8° 4.5 km/h
Gradeability / Inclination	Max. 15° / 5°

TRAMMING DIMENSIONS

FOPS/ROPS certified position*	H	
A (High position)	2700 mm	106.3 in
B (Low position)	2500 mm	98.4 in

Cornering Left						
Feed	R1	R2	X°	β°	β°	Cornering
CF300-12 ft	5850 mm	4250 mm	34°	22°	15.5°	2500 mm
	119.17 in	246 in				161.77 in

Cornering Right						
Feed	R1	R2	X°	β°	β°	Cornering
CF300-12 ft	5850 mm	4250 mm	34°	22°	14°	2500 mm
	119.17 in	246 in				161.77 in



*Alternative options features/components ** Additional options features/components

OPERATOR STATION

Safety canopy	FOPS (ISO3449) /ROPS (ISO3471)
Operation	Standing drilling, seated tramming
Sound pressure level according to EN791	Operator station: 100 db(A) Emitted: 127 db(A)
Seat	Ergonomic, adjustable for tramming including seat belt
Reversing alarm	Standard

LIGHTS

Front working lights	2 x 35W HID (24V)
Front driving lights	2 x 70 W (24V)
Rear driving lights	2 x 70 W (24V)
Amber strobe light	Flashing (24V)
Staircase light	Standard
Directional light**	Rear lights change according to tramming direction
Extra working light**	2 x 35W HID (24V)

PACKAGES

Regional packages**	LAM, AUS, USC, CIS
Harsh water packages**	Basic (see spec sheet TS2-049)
Antifreezing**	Block heater for engine Hydraulic oil tank heater Water circuit flushing Fuel filter heater

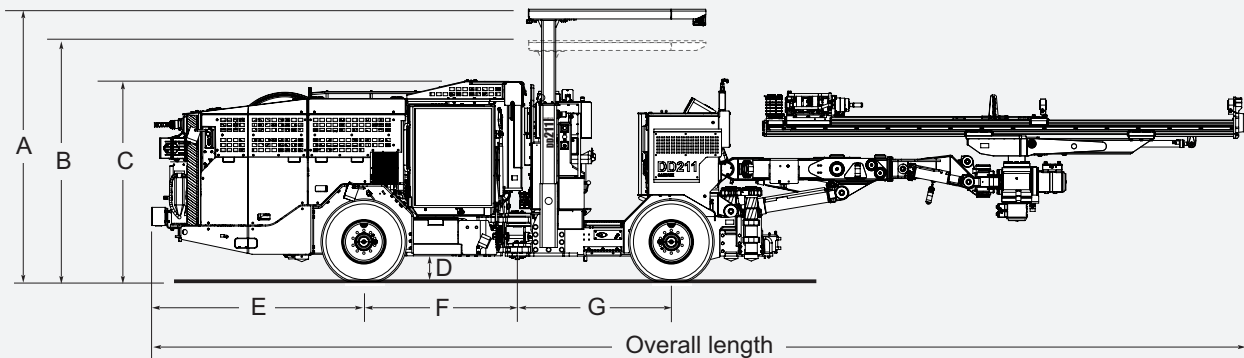
CARRIER

Carrier	NC4	
Carrier type	Wheel mounted, frame steering	
Frame steering	± 34°	
Rear oscillation	± 10°	
Ground clearance	250 mm	9.8 in
Diesel Engine	Deutz D914L04, 55kW. Tier 3	
Transmission	Hydrostatic, automotive	
Wheel motor	Hydraulic with combined brake	
Tyres	300-15	
Tyres*	Foam filled tyres	
Service Brakes	Hydrostatic and positive braking	
Parking and Emergency Brakes	Hydraulic oil immersed multiple disc brakes on wheel motors	
Fuel tank	80 liters	
Hydraulic jacks	Telescopic (front)	
	Vertical (rear)	
Brake release	Manual hand pump	
Total weight Depending on option	Arround 13 000 kg	Arround 28660 lb
Fast filling systems**	Complete	
Wheel chocks and holder**	2 pieces	

EXTRA ITEMS

Spare rock drill**		
Spare wheel assembly**	Standard or foam filled	
Special tools for rock drill**		
Documentation**	Extra manuals	

* Alternative options features/components ** Additional options features/components



MACHINE DIMENSIONS		
A	2700 mm	106.3 in
B	2500 mm	98.4 in
C	1980 mm	77.9 in
D	250 mm	9.8 in
E	1920 mm	75.6 in
F	1525 mm	60 in
G	1525 mm	60 in

OVERALL LENGTH		
CF300-12'	10 700 mm	35.10 ft

DISTRIBUTOR:

Sandvik Mining reserves the right to make changes to the information on this data sheet without prior notification to users. Please contact a Sandvik representative for clarification on specifications and options.

www.mining.sandvik.com